

An aerial photograph of the Skeena River. The river flows from the top right towards the bottom left. A small boat is moving down the river, leaving a white wake. The banks are lined with dense green forests. In the background, there are mountains under a clear sky.

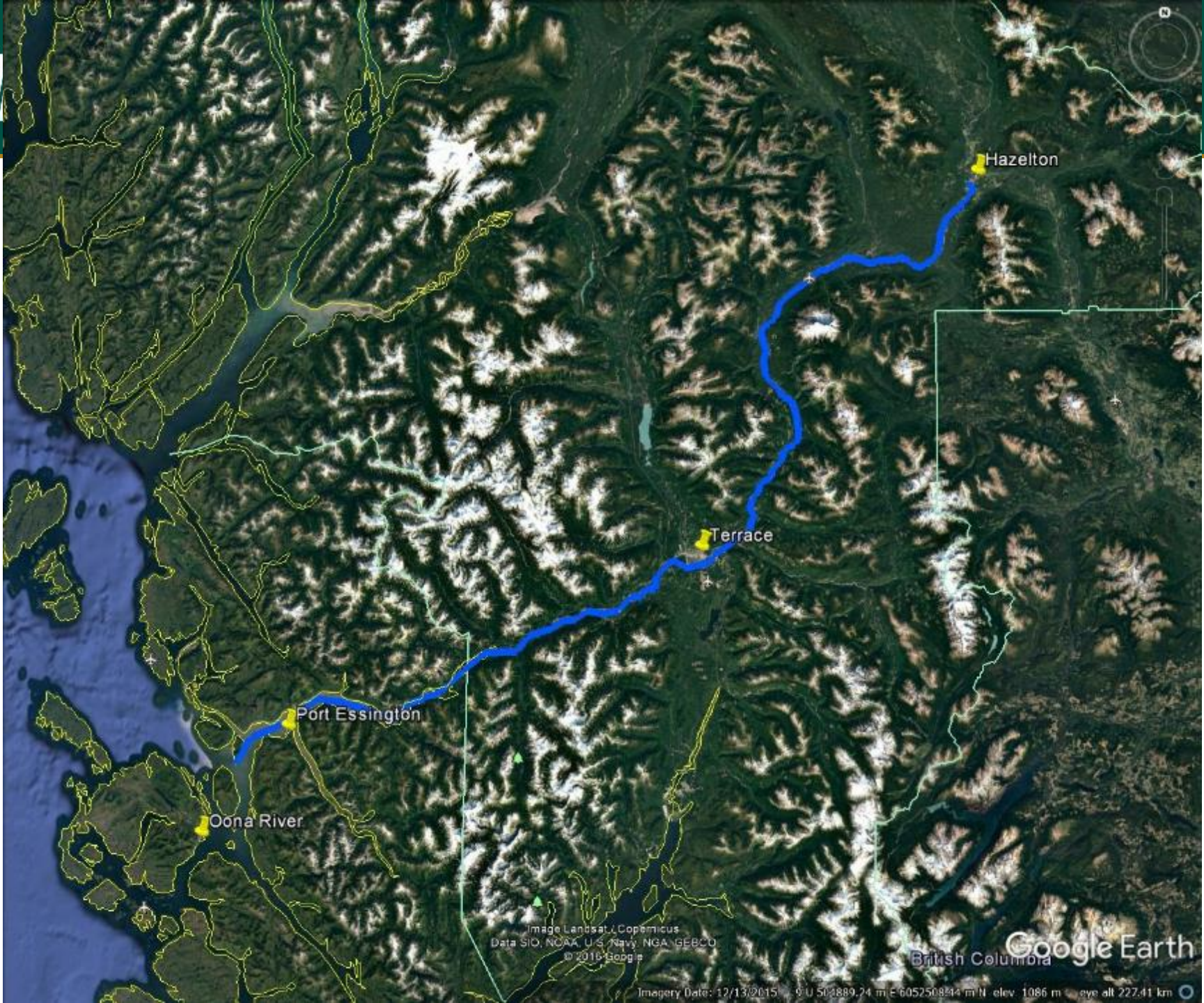
SKEENA RIVER HISTORIC SITES & FEATURES

A VISUAL JOURNEY

UNBC Continuing Studies Northern BC Adventure Tours

- Ghost Towns of Northwest BC
- Jet Boat Photography
- The Town that got Lost! The Anyox Experience!
- Canneries of the North Coast
- Fort George Historic River Journey
- White Sturgeon Biology Tour
- Northwest BC Grizzly Bear Discovery Tour
- Skeena River Historical Journey

U



Hazelton

Terrace

Port Essington

Oona River

Image Landsat, Copernicus
Data SIO, NOAA, U.S. Navy, NGA, GEBCO
© 2016 Google

British Columbia Google Earth

Imagery Date: 12/13/2015 9 U 502889.24 m E 6052508.94 m N elev. 1086 m eye alt 227.41 km









Gitseguecla Totem Poles



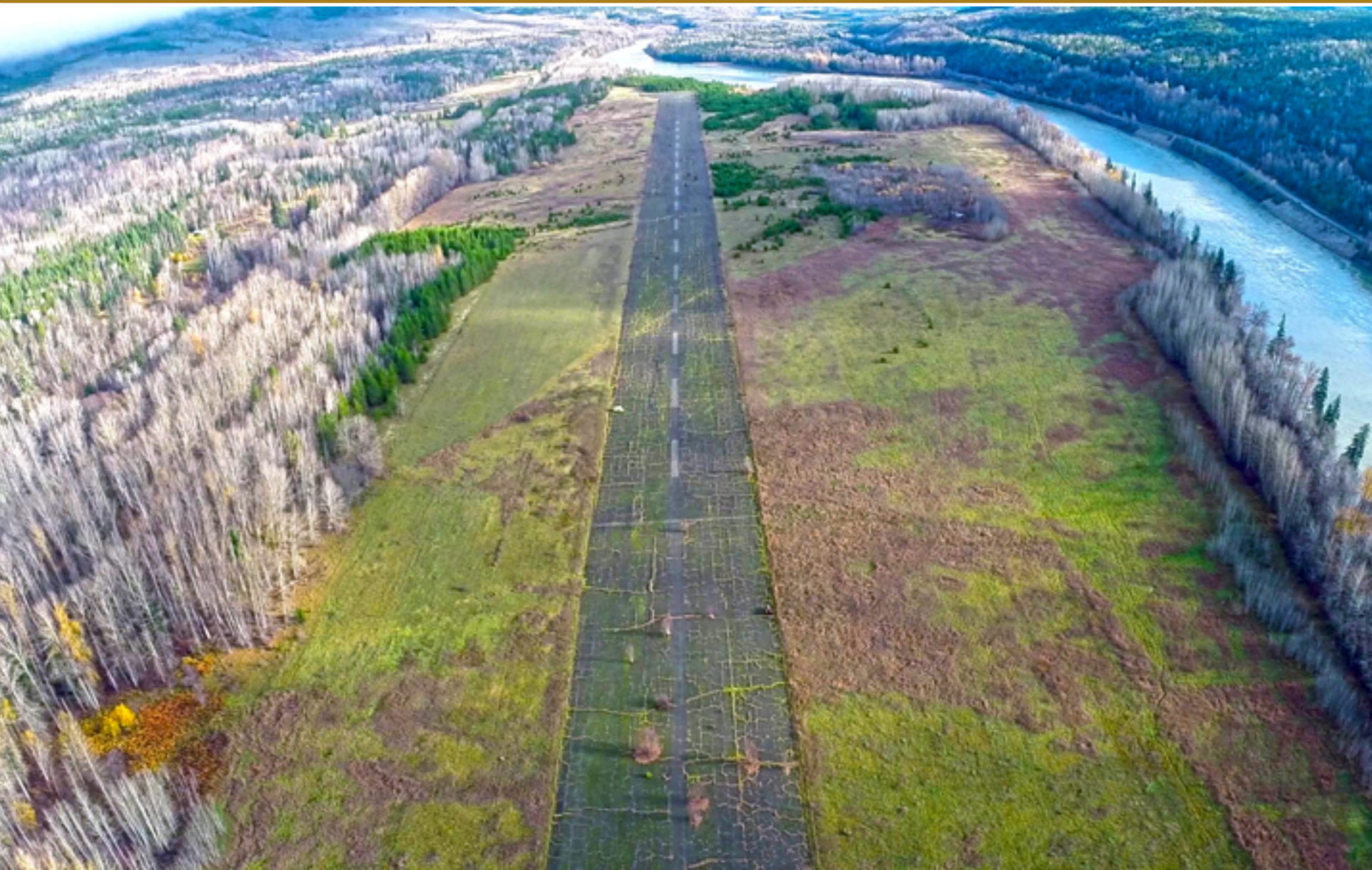


St. Paul's Anglican Church & Bell Tower



Gitwangak Totem Poles

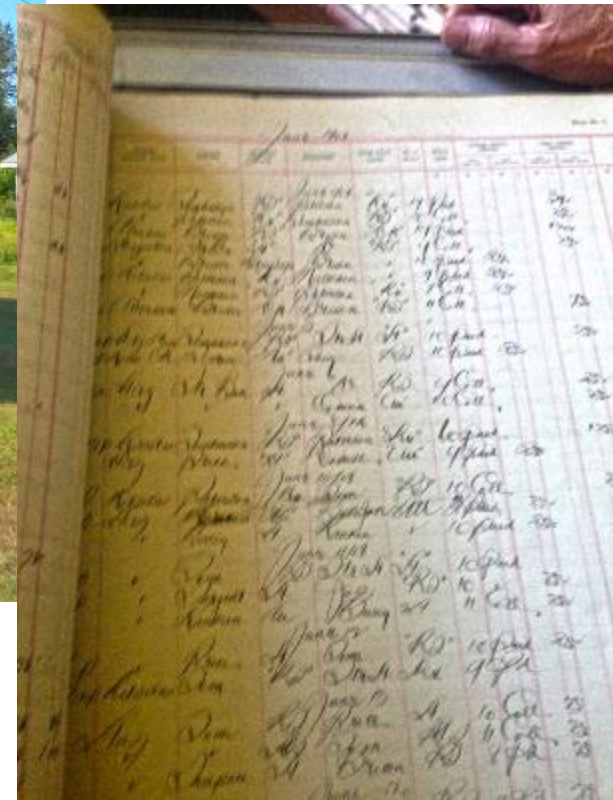






Meanskinisht Cemetery





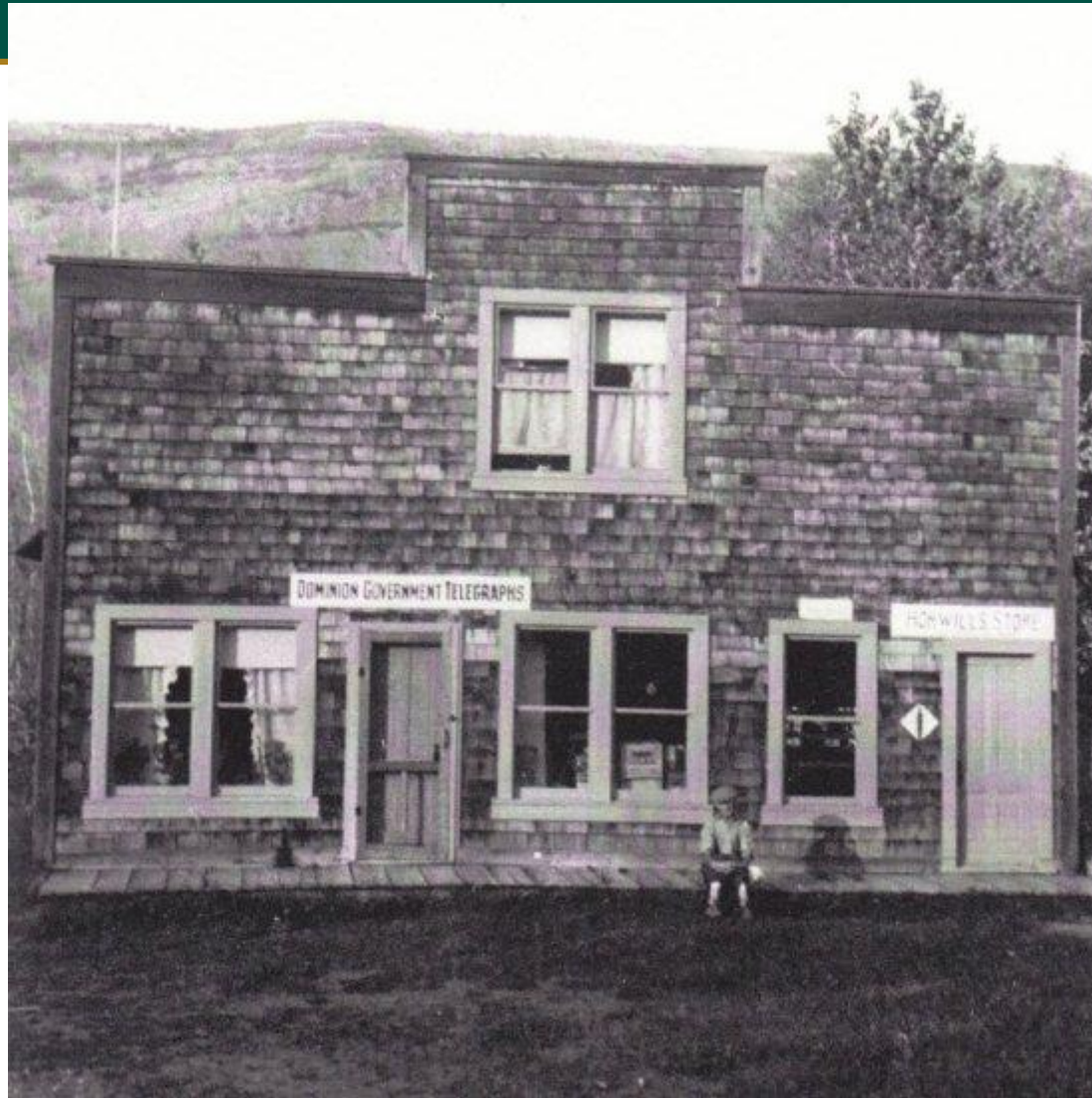
Cedarvale Post Office 1976











1930's photo – D. Horwill

























Usk Reaction Ferry







Comaham Headstone



Abandoned Railway Tunnel

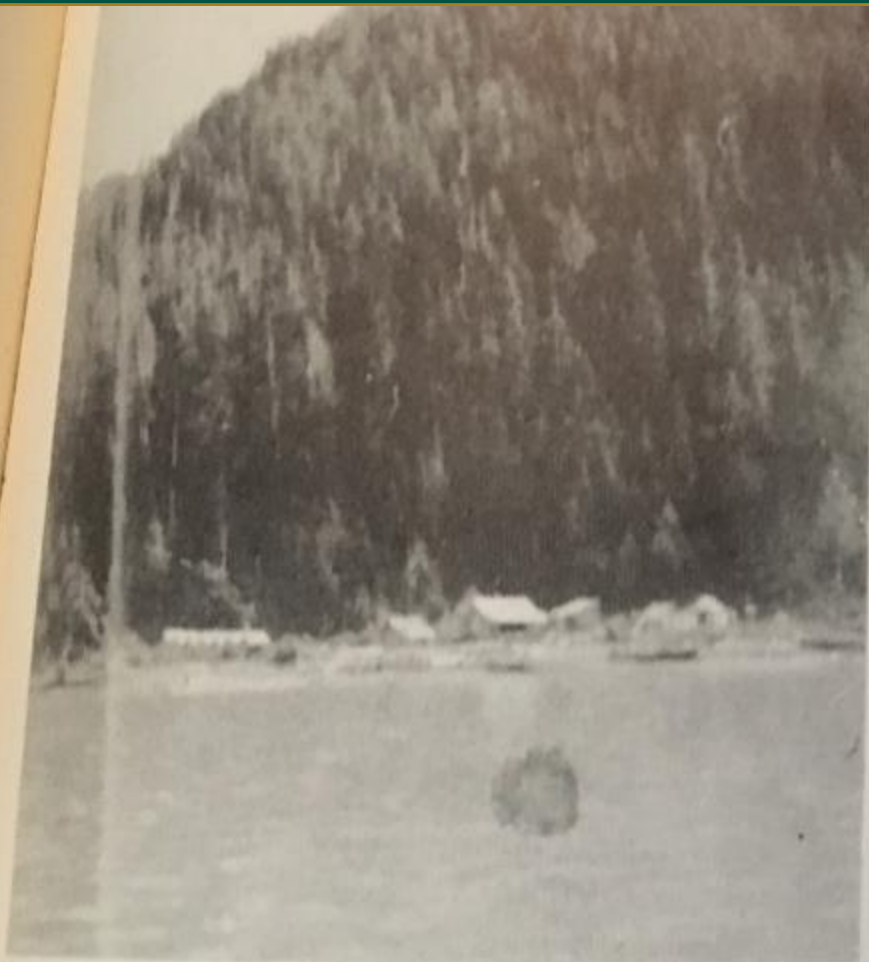








Frizzel Hotsprings



Frizzell's Hotsprings on the south bank of the Skeena, pictured in 1936. The now unused springs are upriver from Essington, just to the left of the towers which were built around the Skeena in 1930.



Fun in the Hotsprings in 1936. At one time the Frizzells had eight cabins and an apartment house there with two tanks at the hot springs, the larger one being 18 feet long, 10 feet wide and six feet deep.



























Shirley Mills Dam and Piping







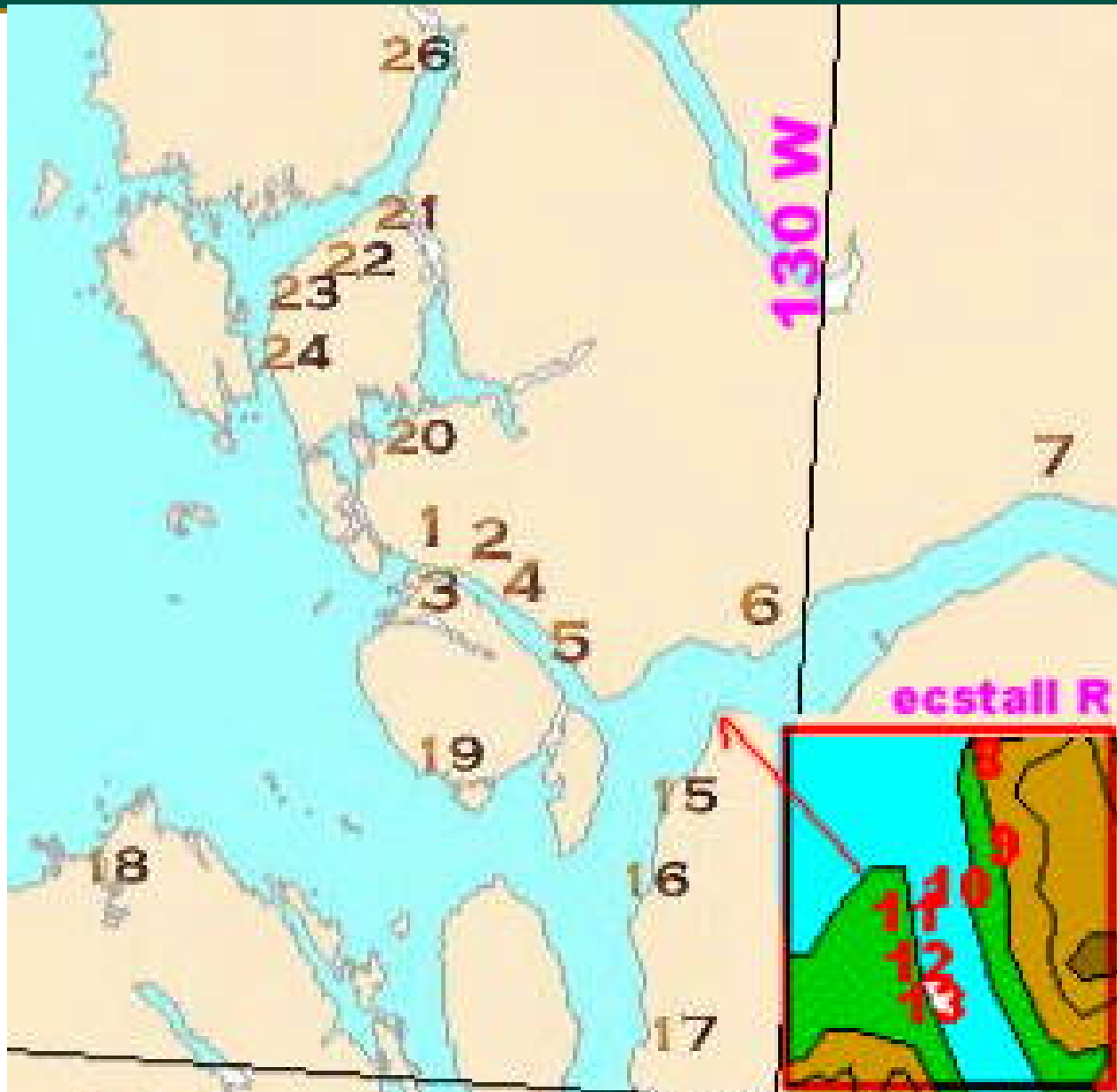


































































Thanks for Coming!

Questions?