

Dorreen

Past & Present

prepared by

Ken Newman

for

UNBC , Terrace Campus

Presentation

Ghost Towns of the Northwest, Past & Present

October 28, 2015



Dorreen, B.C.



Dorreen Access



Access into Dorreen along old mining road



Section of mining road from Fiddler FSR used by ATV & 4x4 which connects to newer road leading to CNR tracks northeast of Dorreen.



Section of original mining road branching off road used by ATV & 4x4 leads to Lots 11 & 12 at Dorreen

2011 Photos

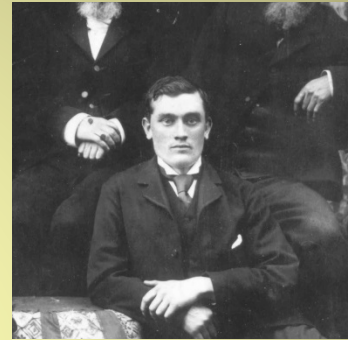
Dorreen is DL 2500



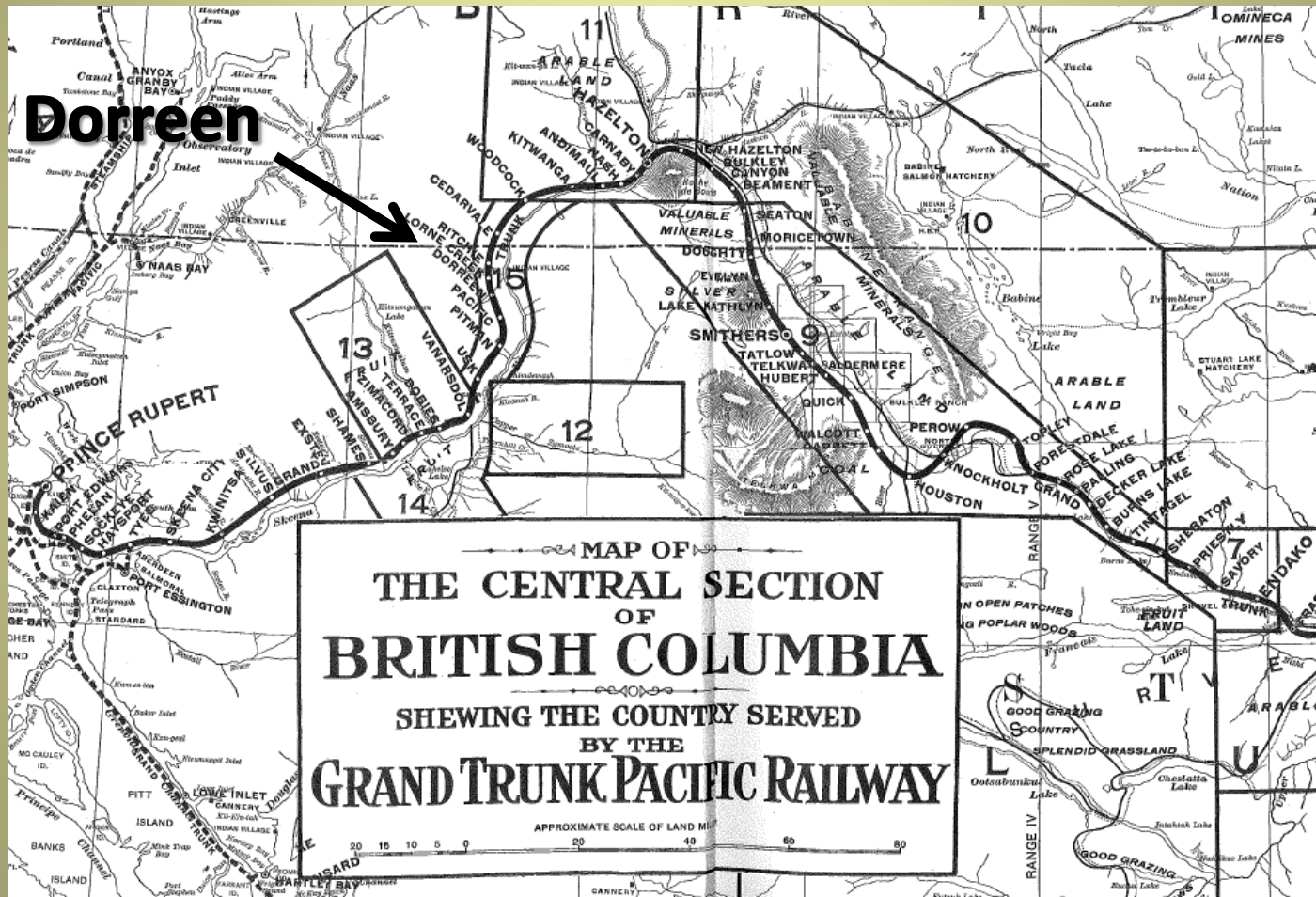
Key Individuals

Ernest J. Dorreen

- New Zealander
- A engineer working for the GTP
- GTP construction in Skeena Valley 1908-1914
- GTP Construction Camp located at Dorreen
- 1911 Census identifies E.J. Dorreen on the Skeena at a placed called Dorreen's construction camp.
- Newspaper clippings dated June 14, 1914 have Dorreen leaving Prince Rupert by steamship for Vancouver.



1911 Promotional Map of the GTP in Central BC by Poole Brothers of Chicago



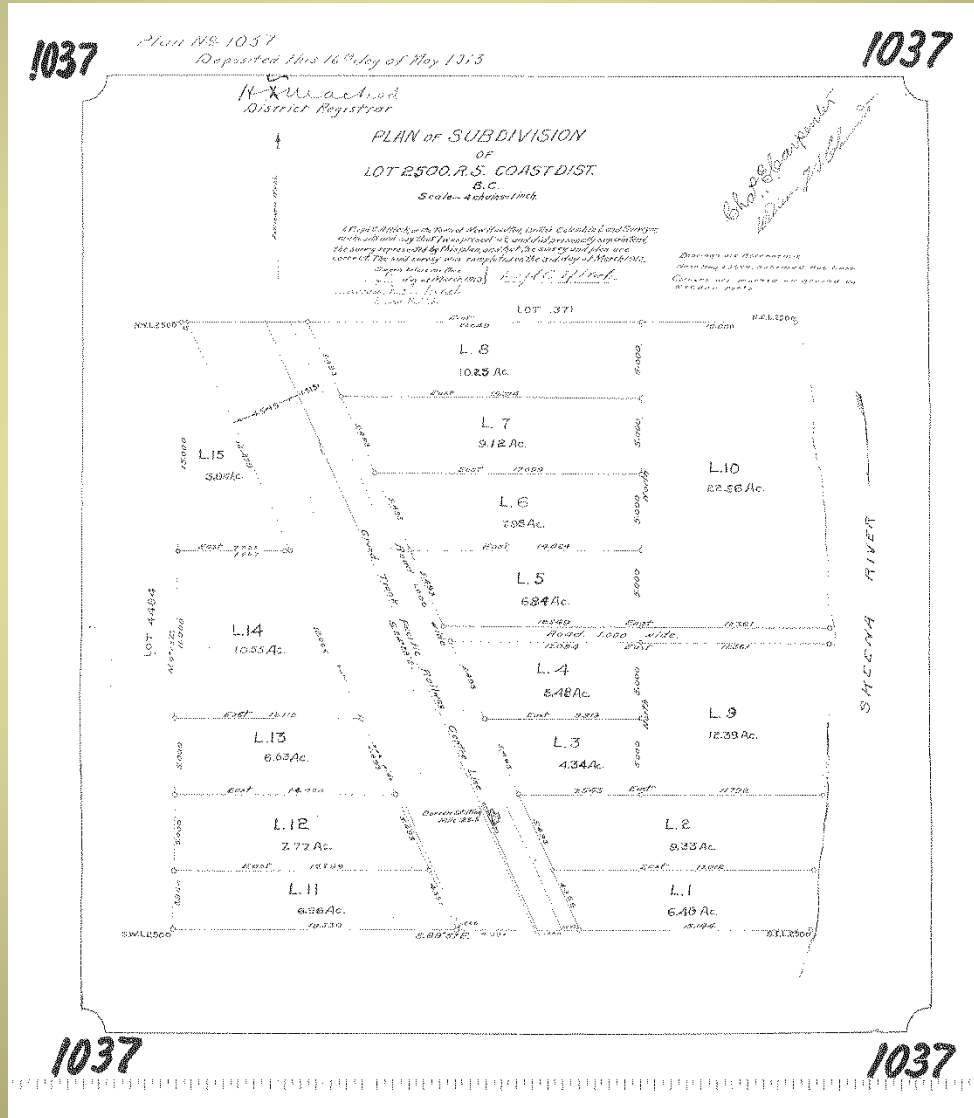
Charles E. Carpenter

- Founder of Dorreen
- Carpenter came to the region as a gold prospector
- Pre-empted District Lot 2500 in 1911 and subdivided it into 15 lots shortly after. Plan register in 1913.
- Carpenter homestead on Lot 10 of DL 2500
- Sold first lot to Thomas McCubbin – Lot 3
- In addition to farming he cut cedar poles for sale
- Died in early 1930s
- Carpenter Creek – 10 km south of Dorreen

Dorreen is DL 2500

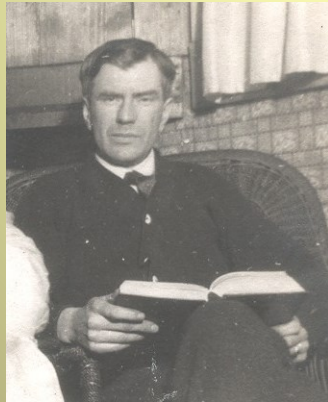
- List of purchases in order of purchase starting in 1924.
- Lot 9 – E. Hogan
- Lot 11 – W. Horwill
- Lot 12 – J. Loen
- Lot 14 – C. Olson
- Lot 4 – A.R. Leake
- Lot 1 – T. Scully
- Lot 5 – J. Carpenter
- Lot 6 – T. Hennessey
- Lot 7 – H. White
- Lot 8 – O. Lundeen
- Lot 15 – O. Hanson
- Lot 13 – unknown

Source : D. Horwill notes of Dorreen



Thomas McCubbin

- Store owner at Pacific
- First to buy land in Dorreen - Lot 3
- Built the Dorreen Store in 1920s
- Owned the store until 1935 or 1936



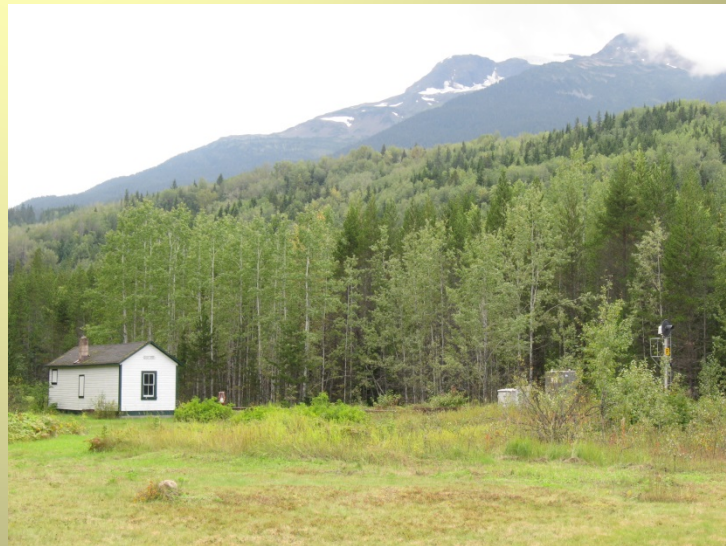
McCubbin's
Store at Pacific

Photos courtesy of website
"The McCubbins "

Lewis Knauss

- Prospector
- Came to Dorreen in 1911
- Staked Fiddler Group claim in 1912 on northeast slope of Knauss Mtn.
- Developed claim in 1914 and built road from Dorreen to mine.
- His mine eventually bought out and operate sporadically until the early 1950s.

Knauss Mtn as viewed from Dorreen Store with modern day train station in foreground



William and Florence Horwill

- Arrived in Dorreen in 1924 to manage Dorreen Store for Thomas McCubbin
- Bought Lot 11 from Charles Carpenter in 1924
- William farmed and had greenhouses selling produce to Hazelton, Terrace and Prince Rupert.
- Florence operated the store and post office
- William was also the Justice of the Peace and sub-mining recorder.
- Bought store from McCubbin in 1935 (or 1936)
- Operated store until his death in 1958
- Florence sold store in 1960 to Ray Ord of Smithers



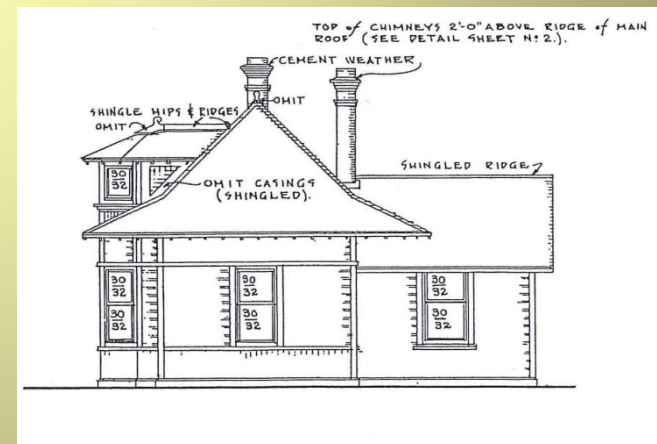
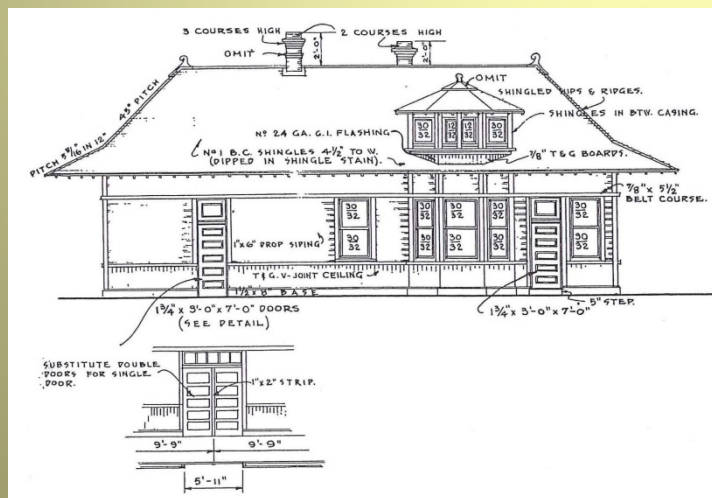
Denis Horwill Photos

Dorreen the Railway Community

- Grand Trunk Pacific built a station at Dorreen in 1913
- Station existed until early 1970s
- Many of the residence were employed by the railway
- Only transportation in the Valley until highway built



Dorreen Station 1940s



GTP Design 'A' Station Plans

Dorreen the Farming Community

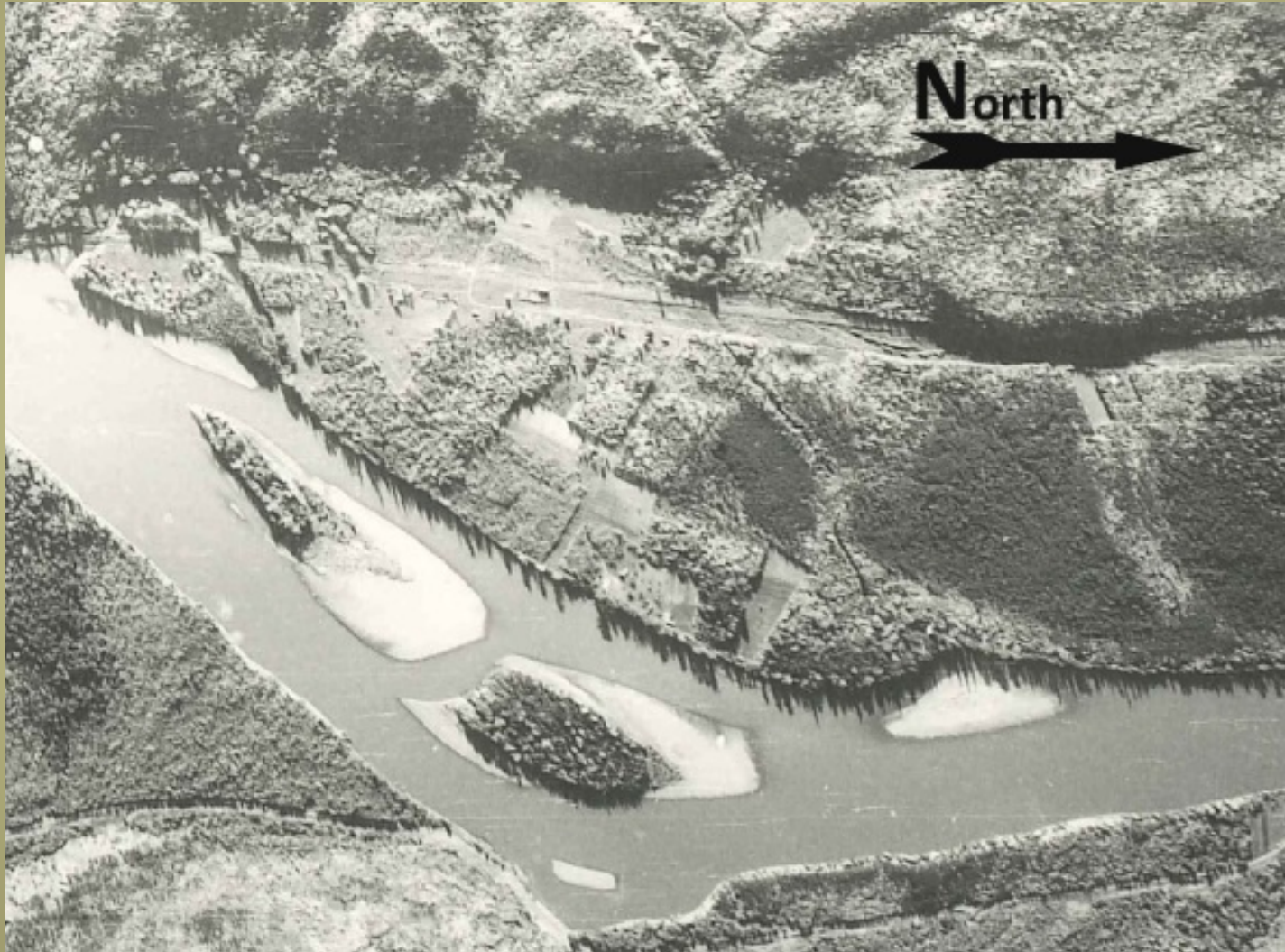
- Many early residence farmed commercially and for subsistence
- Good growing soils along the river
- Still see some fruit trees remaining
- Shipped fruit, vegetables and bedding plants by train to neighbouring communities,
- The Horwills had a large 24' x 100' greenhouse



Strawberry Field in Dorreen

Canadian Archives Photo PA-011222

Dorreen Aerial Photo 1947



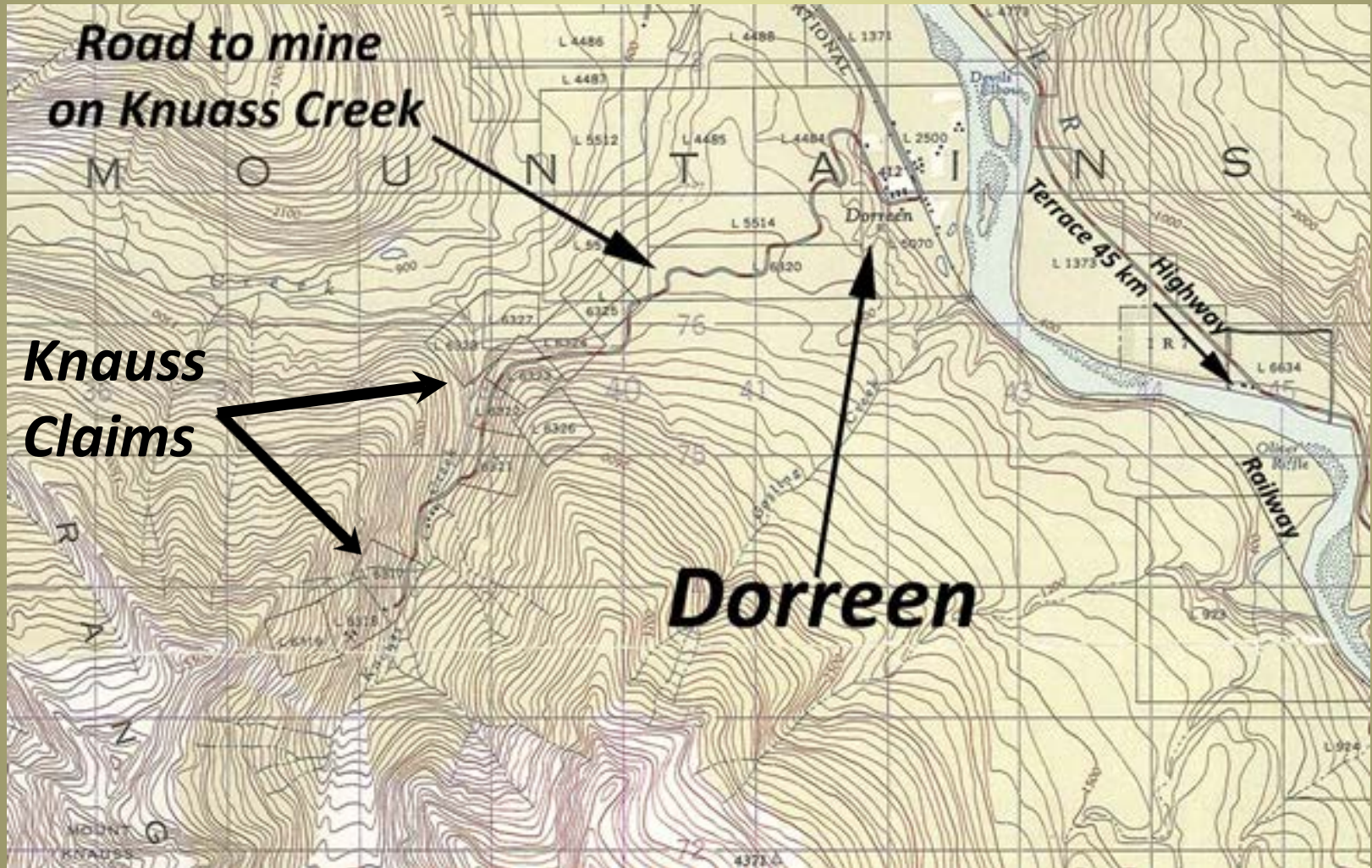
1947 BC Gov't Air Photo

Dorreen the Mining Town

Mining

- Placer gold at Lorne Creek
- Knauss Fiddler Mine
 - L. Knauss 1912-1916 – built a road to the mine
 - 1923 80 tons of ore shipped by JF Duthie
 - 1926 JW Tredway built aerial tram line shipped 100 tons of ore
 - 1926-1949 mine not operating
 - 1949 Dorreen Mines Ltd buys property rebuild road, build mill and 2800 ft aerial tram across Knauss Creek
 - 1949-1953 Dorreen Boom years
 - Mine closed in 1953
- Other mining/prospecting across the Skeena
- Many working in area mining lived in Dorreen

Knauss – Fiddler Mining Claims



1961 Canada NTS Map

Dorreen General Store

- Located on a approx. 1 acre parcel subdivided from Lot 2 (3?)
- Built in around 1920 by Thomas McCubbin of Pacific
- Was the centre of town across the road from the GTP Stn.
- Was like the local government agents office. Post Office and sub-mining records office and Justice of the Peace
- Operated until about 1960.



Dorreen Store during 1936 flood
D. Horwill Photo



Dorreen School

- First School maybe as early at 1916-18
- School built in 1922 by Charles Carpenter near where the store was.
- 1930 new on room school built on 1 acre parcel of Lot 4 land donated by Carpenter.
- Records starting in mid-1920 show never more than 12 kids attended.
- School closed in 1953. Last teacher Mrs. Elaine Gregg



School in 1938



School in 2011

Dorreen the Tourist Destination

Dorreen Enterprises

- Own Lots 3 , 11, 12 and store (Lot A)
- A family from California bought the properties in the 1960s.
- Attempted to do a tourist resort / fishing lodge

Seven Sisters Ventures

- Art Bates and partners from California/Washington bought two large lots near Dorreen in the 1990s.
- Proposed a \$20 Million hut to hut hiking tourist operation in mountains on the west side of the Skeena.
- Grand plans included a lodge at Dorreen and an aerial tram across the Skeena.

Homes of Dorreen



Lot 6 Tom Hennessey's Cabin



Lot 9 Eugene Hogan's House



Lot 10 C. Carpenter Home



Lot 4 Charles Leake Home

Homes of Dorreen



Lot 11 Bruce Webb House



DL 5070 Swedish cabin



Lot 2 Bob McLean's House



Lot 14 Olson House

Dorreen Directories

DORREEN

a station on the G. T. P. Ry, 6 miles east of Pacific, on the Skeena River, and 125 miles east of Prince Rupert, at base of Fiddler Mountain. Population 20. Local resources: Mining, including promising prospects of gold and sulphite ore, carrying good values in silver, gold, etc. Agriculture has a promising outlook also.

Address mail Doreen, via Lorne Creek post office, distant 3 miles.

Burns John mining
Carpenter Charles farming and mining
Deering John railway man
Evans E J farming
Fiddler Creek Gold Mining Co
Henry Follie farming
Kirby Patrick railway man
Ludwig P G farming
McCubbin & Haydon general store
McDonald Roderick farming
McNichol Peter mining
Michael Arthur farming
Prestly lineman
Taylor Charles farming
Vallee Cyril mining

Wrigley's BC Director 1918

DORREEN

a P.O. and flag sta. on C.N.R. and Skeena River, 4 m. west of Lorne Creek. In Skeena Prov. Elec. Dist. Pop. 40.

Blaychuck J sectmn CNR
Canadian Government—
Postmaster—W E Horwill
Telegraphs—W E Horwill opr
Carpenter Chas E ranching
Dorreen Mine W J Tredway mgr
Dorreen School W E Horwill sec
Frost J sect formn CNR (Ritchie)
Hambly Geo ranching (Ritchie)
Hibbard Miss H M sch tchr
Hillyard Albt J farming
Hogan Eugene miner Doreen Mine
Horwill Wm E genl store and PM
Johnson A farming
Johnston A F miner (Ritchie)
Jones J miner
Lamb R A farming (Lorne Creek)
Leake Chas H farming (Lorne Creek)
Leake F carpenter
Leake W A teleg opr (Lorne Creek)
Loin John B & B formn CNR
McDonald Hugh owner Walverly Group
McDonald J H miner
McNaughton A miner (Lorne Creek)
Michiel Arthur F farming
Olson C carpenter
Patrick John sectmn CNR
Poljano F sectmn CNR
Rega H sectmn CNR
Stoynoff J sect formn CNR
Taylor Chas farming
Tredway Mine
Walverly Group H McDonald owner

Wrigley's BC Director 1932



Tom Hennessey (left) and Roy Scully in front of Tom's Cabin
c. 1950

Photo courtesy of Howard Neighbor

Lorne Creek - before Dorreen

- Before the railway Lorne Creek was the place
- Gold discovered in 1884
- 180 miners working the creek in 1885
- Hydraulic mining into early 1900s, other smaller outfits into 1930s
- Small community continued for short time after



Leake Family Homestead & Post Office at
Lorne Creek 1926

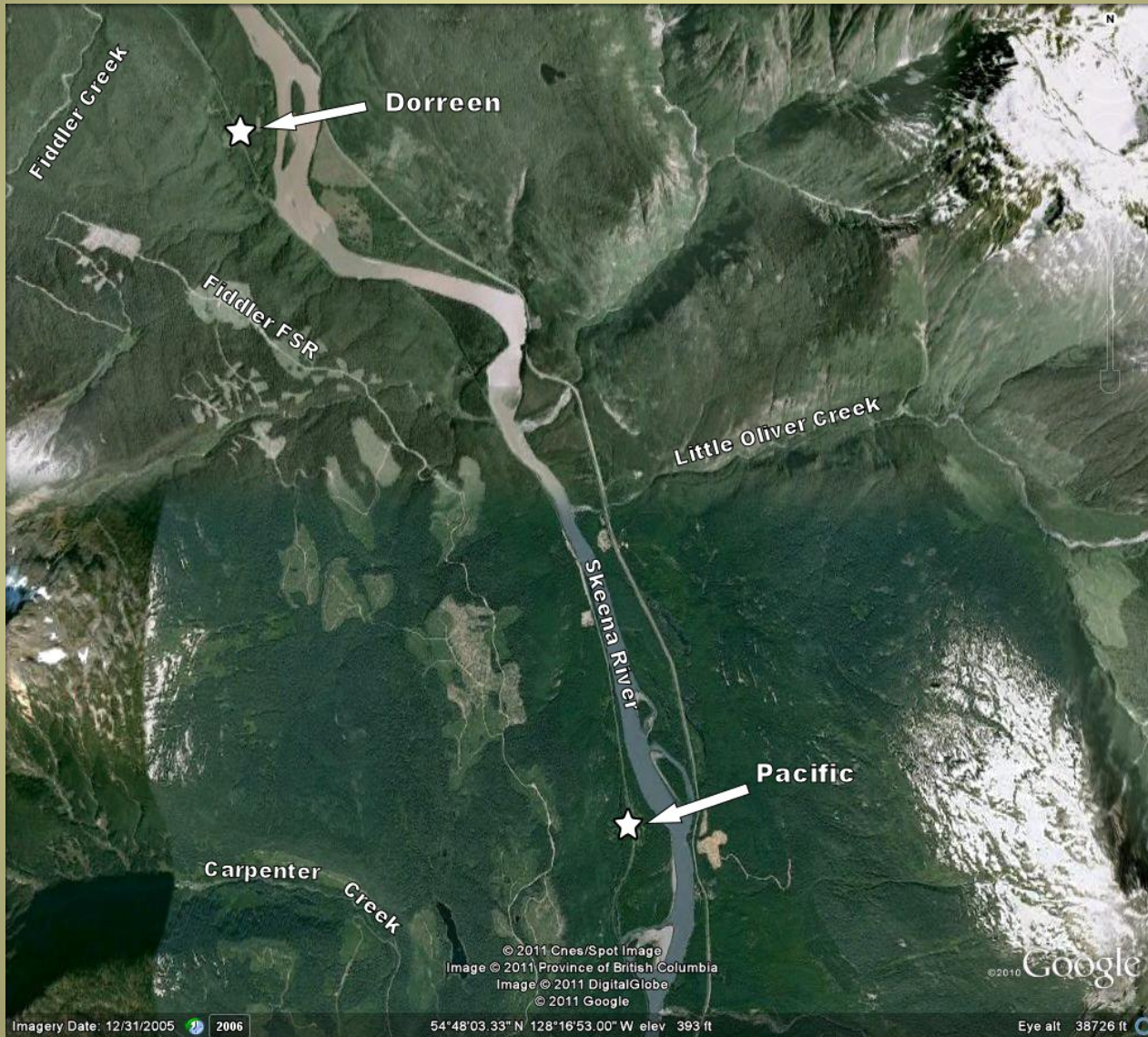
Photo courtesy of Jim Lamb

Lorne Creek



Dorreen and Lorne Creek used to be connected by a road with a bridge across Fiddler Creek.

Dorreen & Pacific



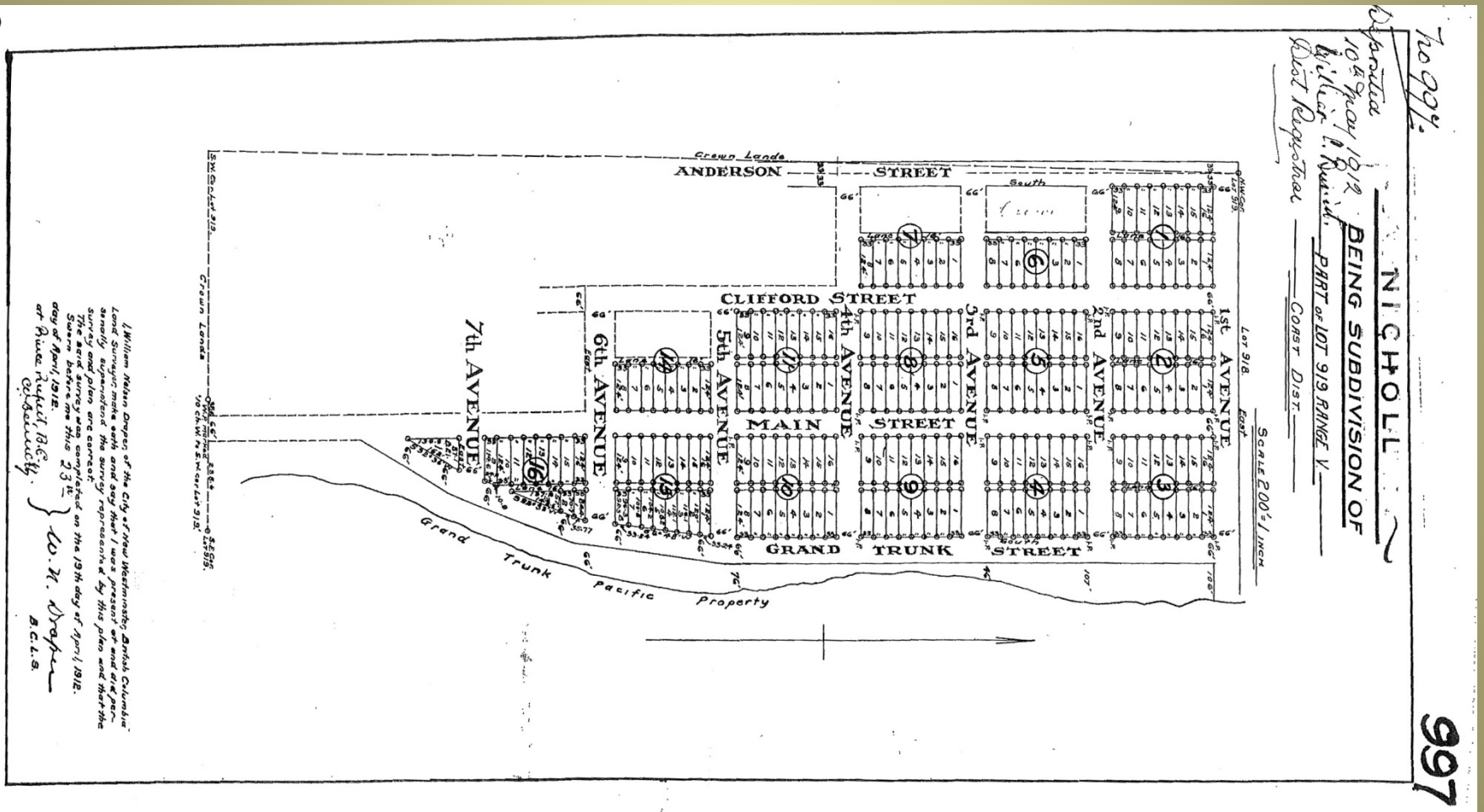
Pacific

- Pre-empted by Jens Anderson in 1909 who sold land to the GTP
- Originally known as Nicholl before the GTP
- Located 10 km south of Dorreen
- First Divisional Point on GTP east of Prince Rupert
- Early on was bigger and more significant than Dorreen
- Roundhouse and wye yard
- Had store, school and hotel



Thomas McCubbin's General Store at Pacific
Photo courtesy of website "The McCubbins "

Pacific (Nicholl) Town Plan Registered in 1912



997

GTP Nicholl-Pacific Station



GTP Design F Station built in 1913.
Notice name plate says "Nicholl"

Photo courtesy of website "The McCubbins "

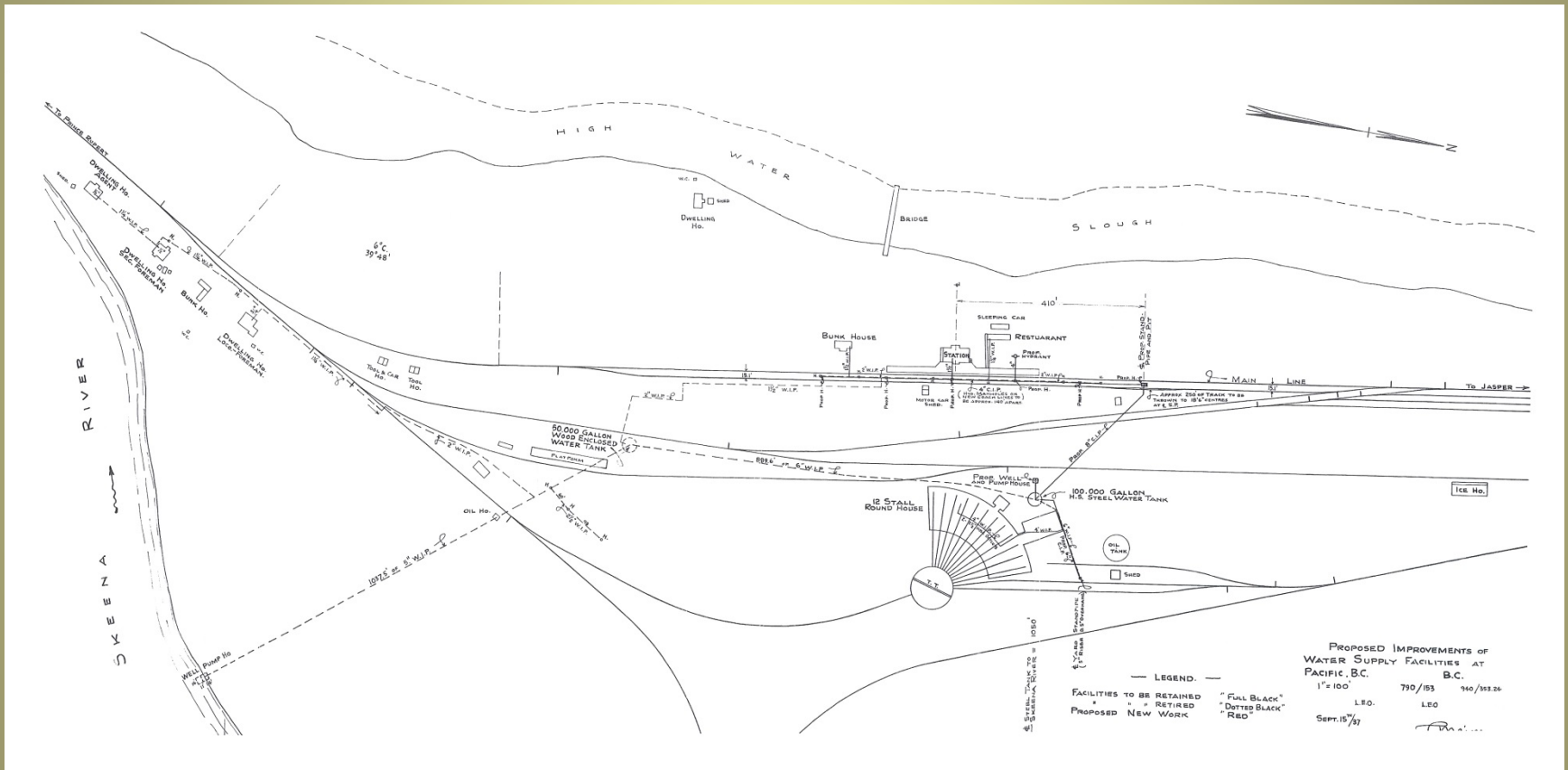
GTP Train stopped at Pacific in 1915.
Notice name plate says "Pacific"

Canadian Archives Photo
PA-011225

Original Station burnt down in 1930s

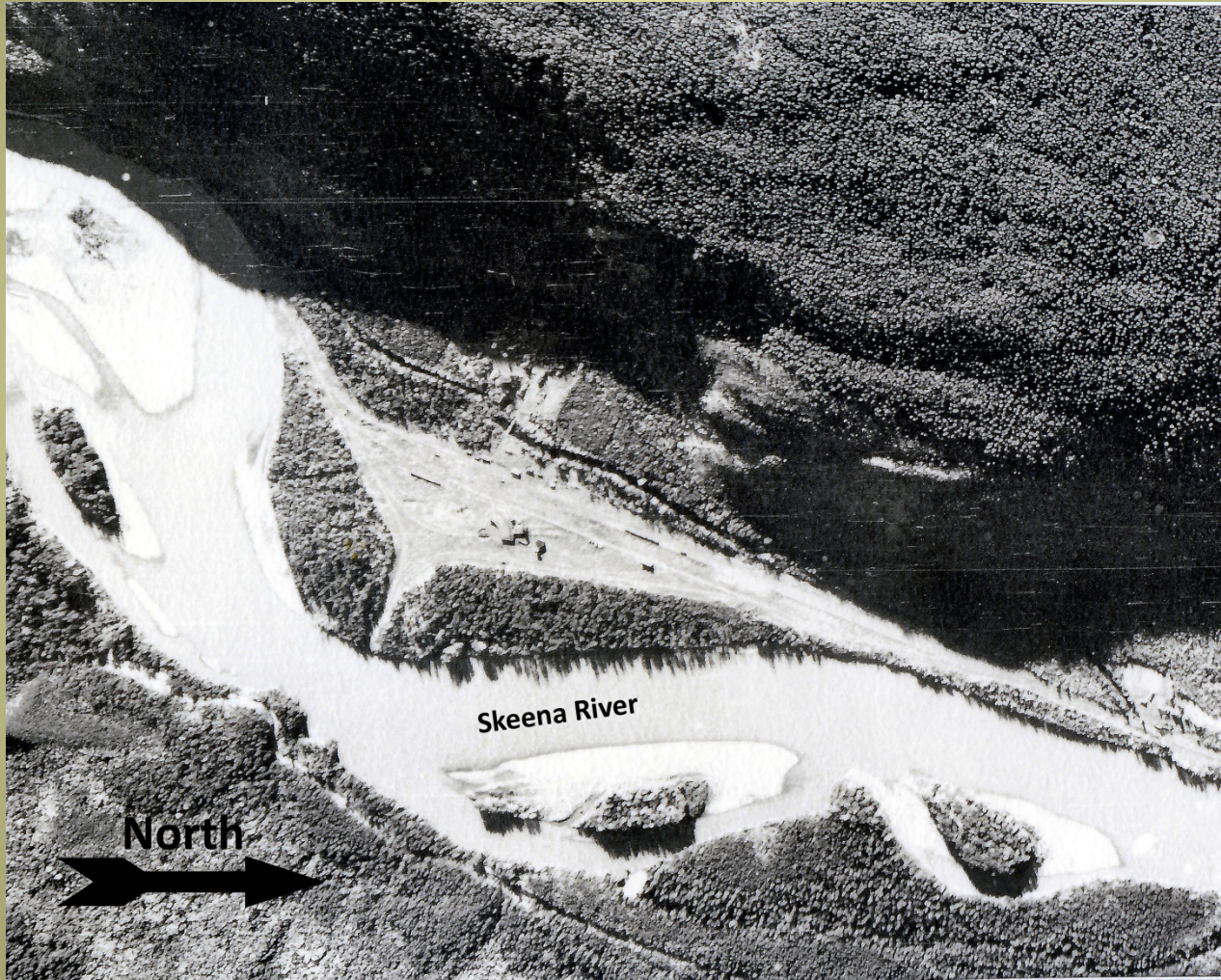


Pacific GTP Yard Plan - 1937



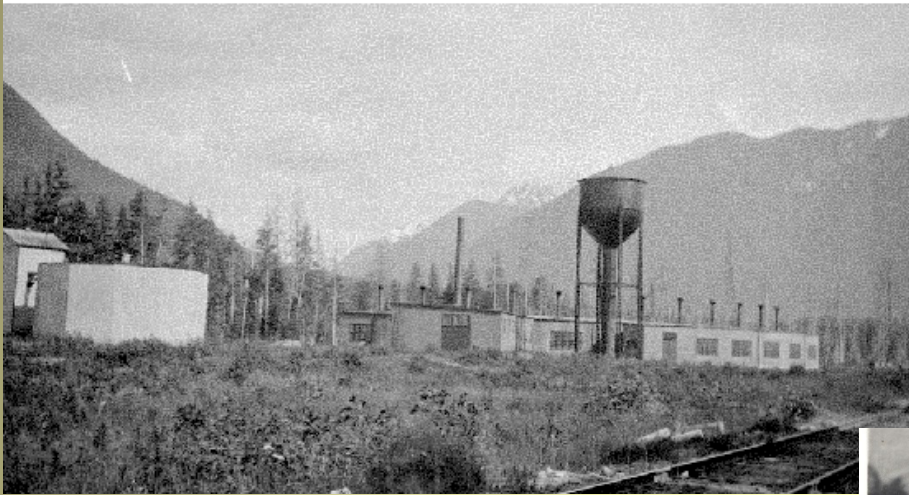
Pacific GTP Yard plan courtesy of Les Kozma

Pacific Aerial Photo 1947



1947 BC Gov't Air Photo

GTP Roundhouse at Pacific



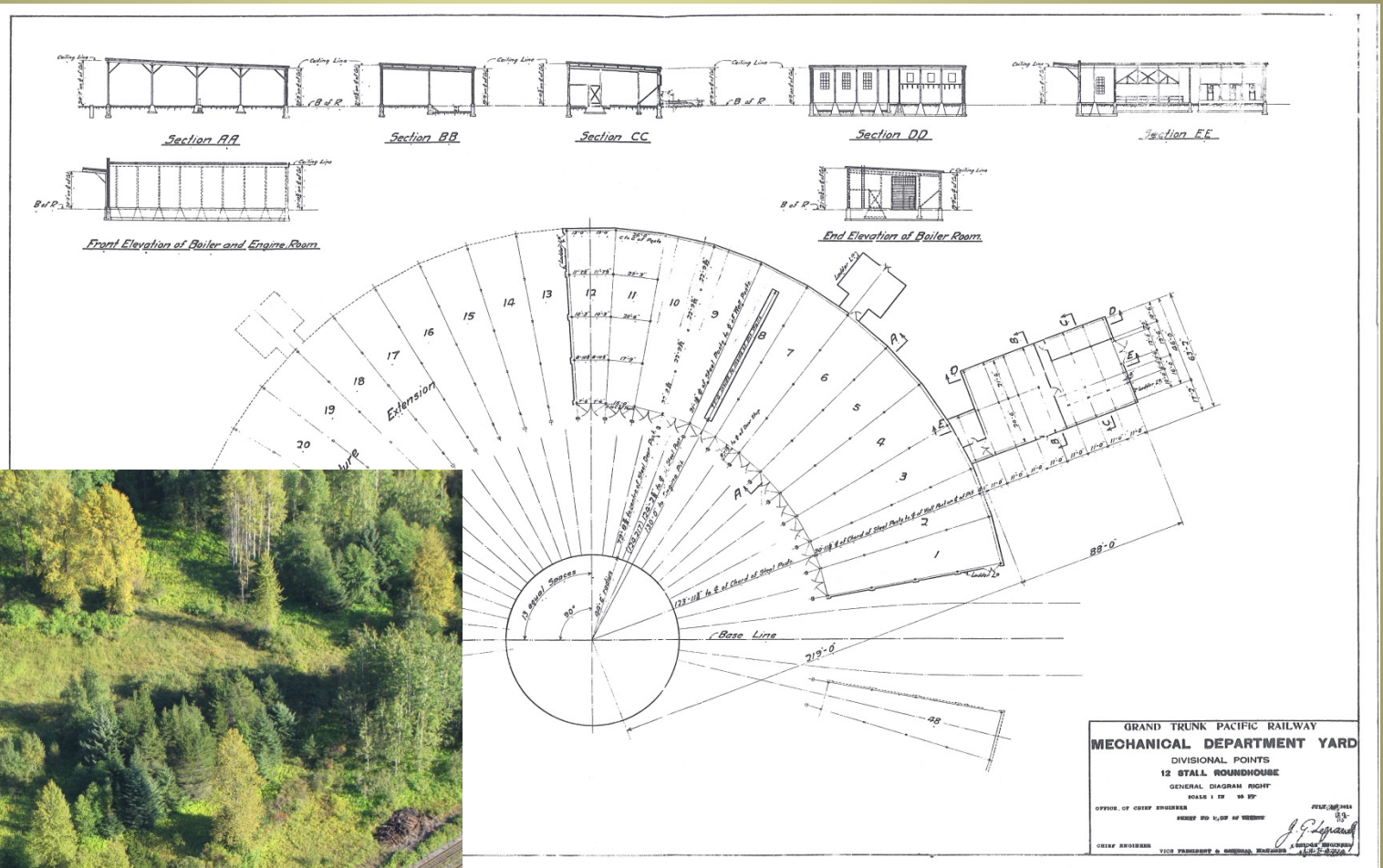
GTP Roundhouse at Pacific in 1921
(BC Archives Photo)

GTP train and roundhouse during
1936 flood (UNBC Archives Photo)



Roundhouse foundation, 2011

Pacific Roundhouse Plans



1914 GTP 12 Stall Roundhouse Plan

Courtesy Les Kozma

2013 Aerial View of Pacific Roundhouse site

Pacific of Old



Downtown Pacific
Courtesy of "The McCubbins" website



View from rail tracks toward Pacific during 1936 flood
Courtesy of "The McCubbins" website



Pacific second GTP Station
Courtesy of "The McCubbins" website



Nichol Hotel
Courtesy of H. McRae

Modern Day Pacific

