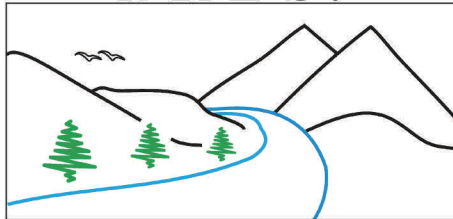


NRESi



"Our environment is our future"

For **Eluminate** information and link to the webcast: http://www.unbc.ca/nres/nresi_webcast.html

RESEARCH COLLOQUIUM SERIES

Dr. Olav Slaymaker

University of British Columbia
Geography



Friday
Sept 6, 2013

3:30 - 4:30

LECTURE THEATRE

8-166

THE IMPORTANCE OF MONTANE BIOMES IN SEDIMENT PRODUCTION

Much effort has been expended by geomorphologists in determining sediment production from the most extreme mountain environments and certainly there is much evidence to confirm that sediment production records have been set in high relief, high elevation and high latitude locations. Most global models confirm that there is a monotonic relation between relief and/or elevation and sediment yield. But do these models tell us anything about where the sediment is actually produced? This discussion poses questions from regional scale morphology to global scale sediment production.