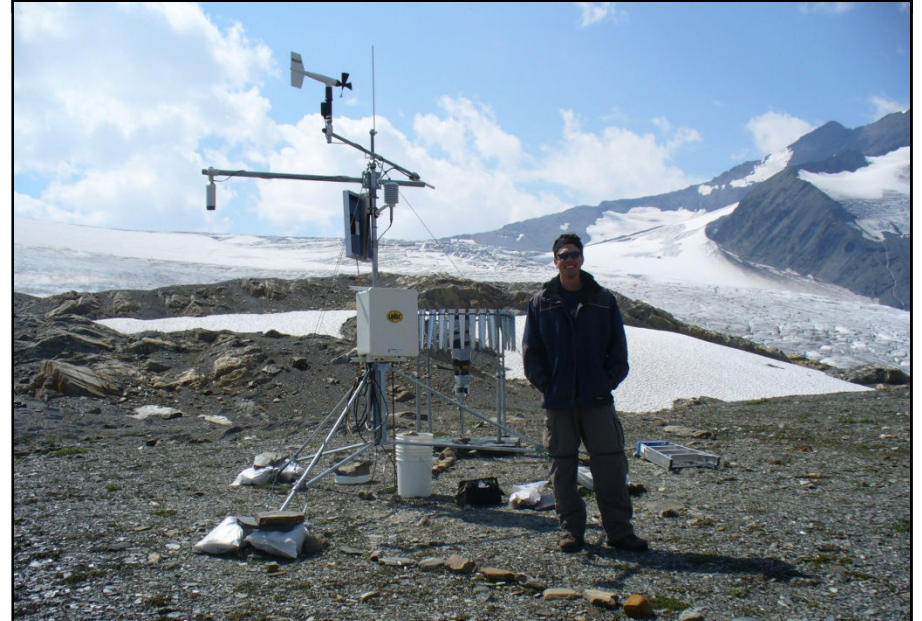
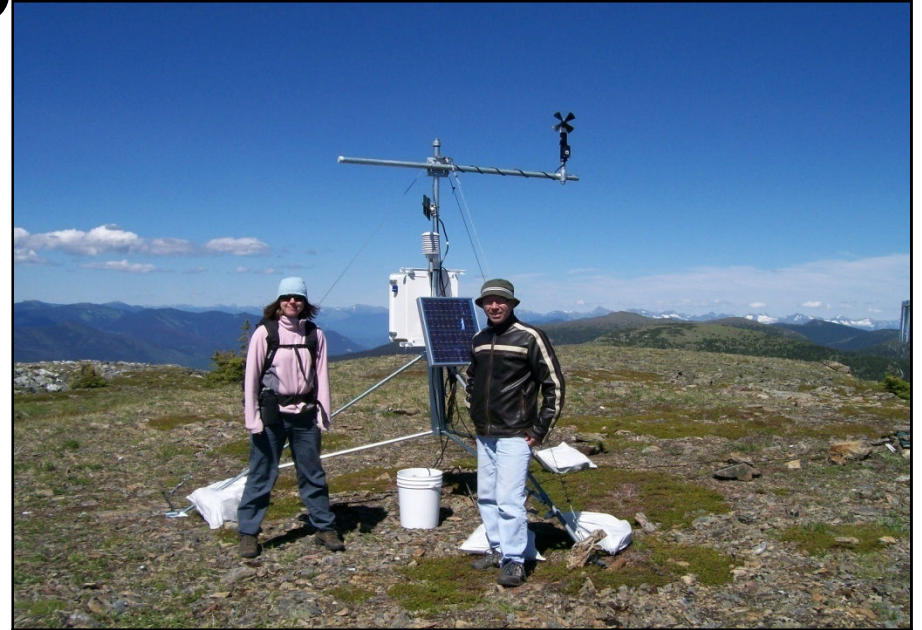
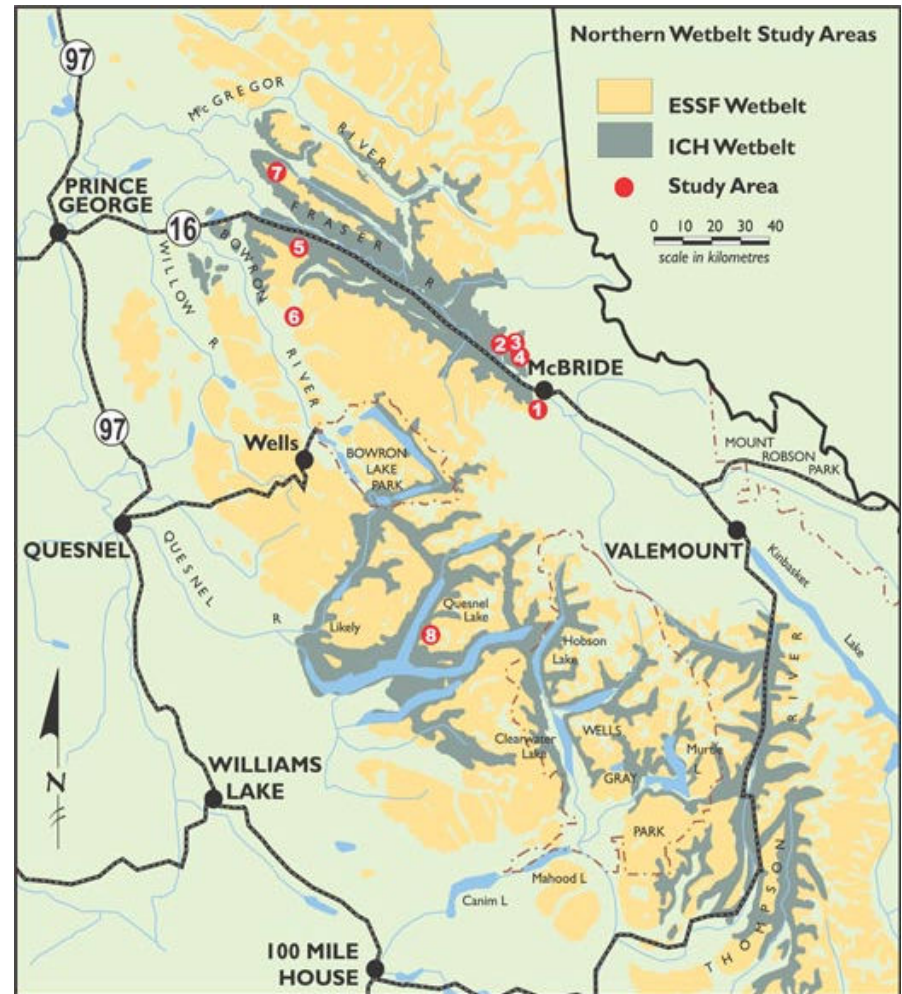


Northern Hydrometeorology Group



BC's Interior Wetbelt



<http://wetbelt.unbc.ca>

What is the Cariboo Alpine Mesonet (CAMnet)?

- Mesoscale network (mesonet)
- Consists of 8 meteorological stations and 2 radio repeater stations
- All of these are currently deployed in the Cariboo Mountains

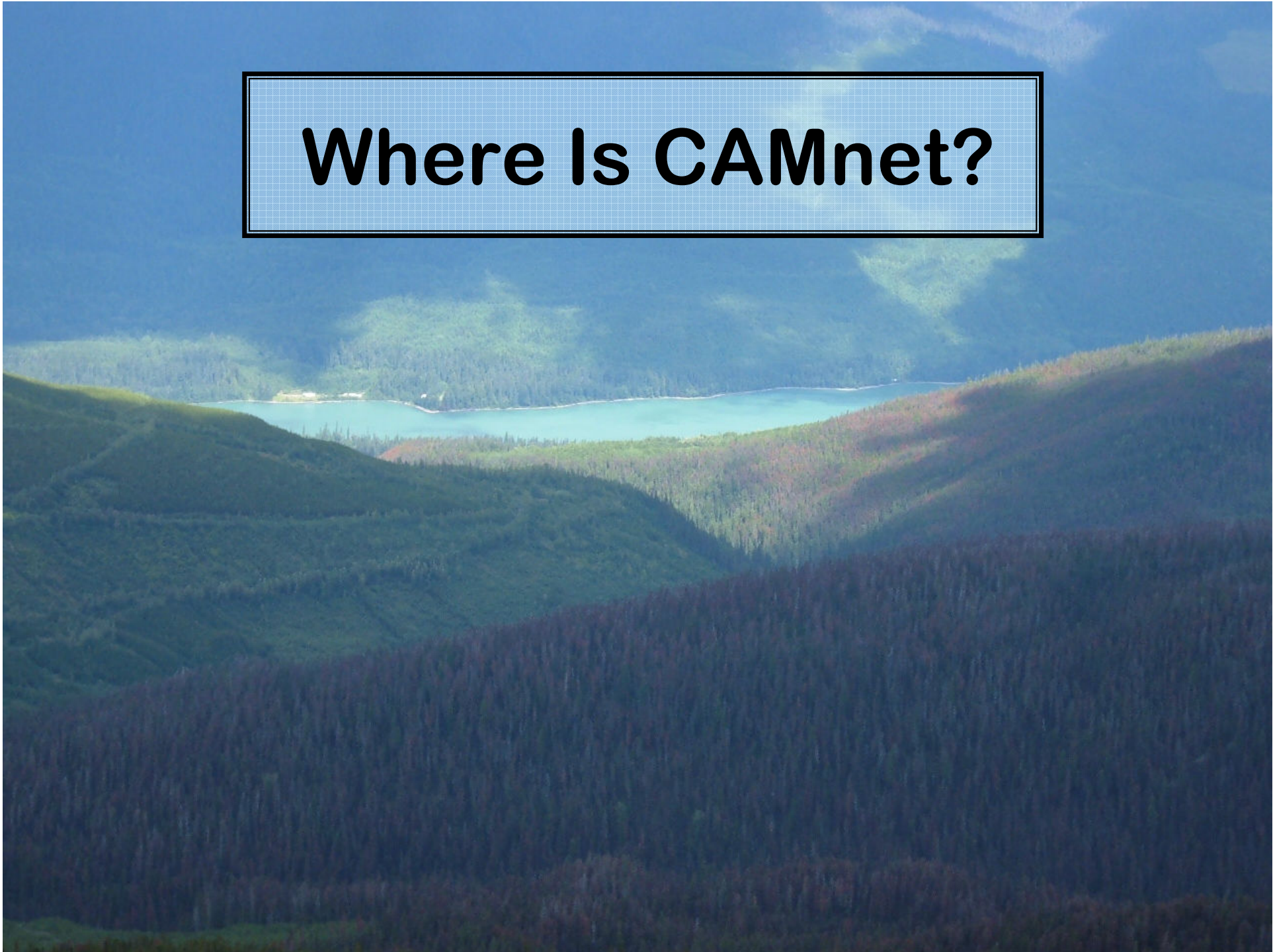
What Is Being Measured By CAMnet?

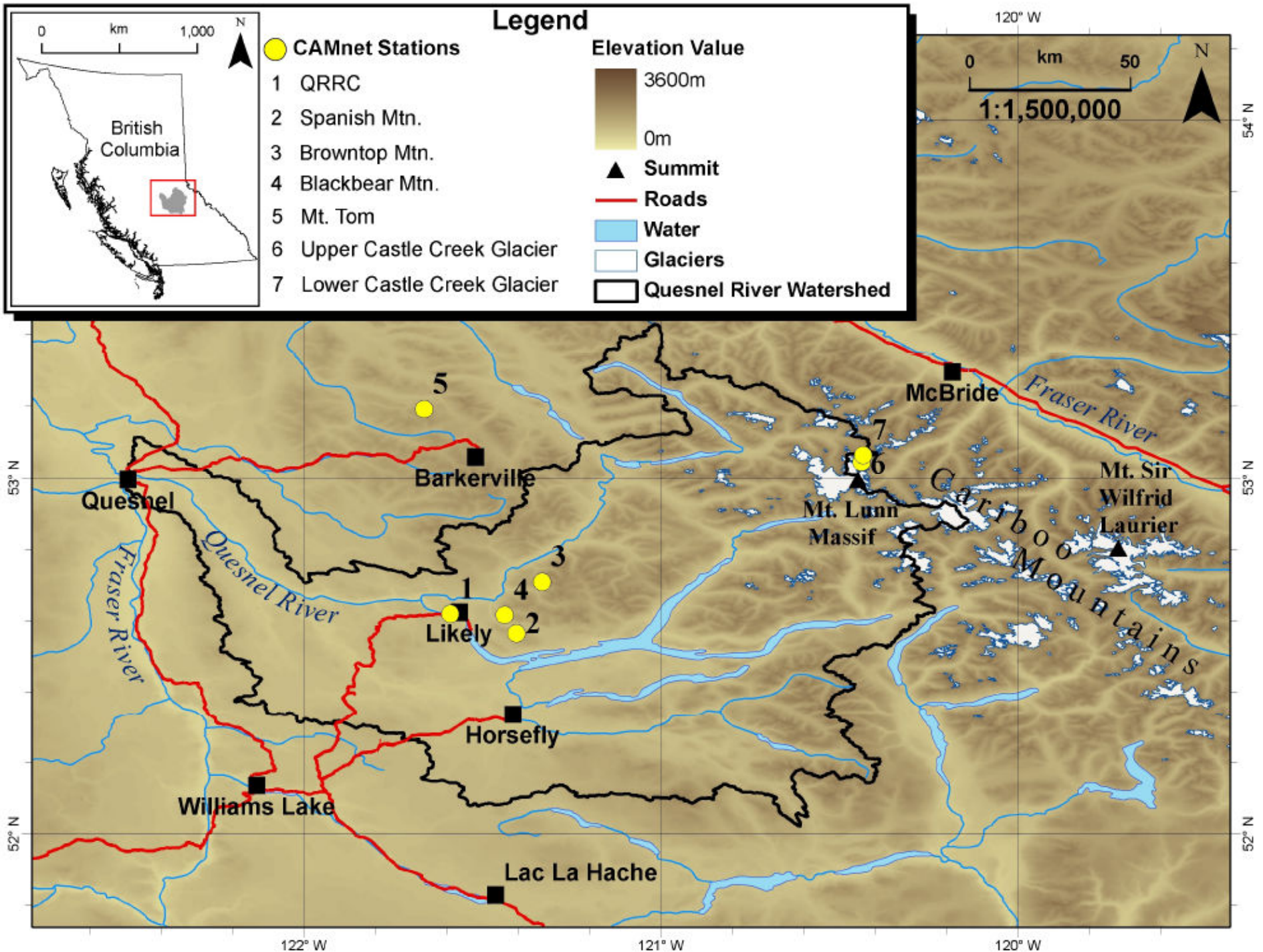
- **Sensors Measure**
 - Atmospheric Pressure
 - Air Temperature and Relative Humidity
 - Wind Speed and Direction
 - Precipitation
 - Snow Depth
 - Soil Temperature and Moisture Content
- **Averaged over 15-minute intervals**

What Are the Goals of CAMnet?

1. To improve monitoring of climate change at high elevations in the Cariboo Mountains
2. To quantify fluxes & stocks of water
3. To provide observations to validate numerical models/remote sensing data
4. To support research activities in the area, including those of WC2N

Where Is CAMnet?






Station 1: QRRC

- Installed August 2006
- 744 m elevation

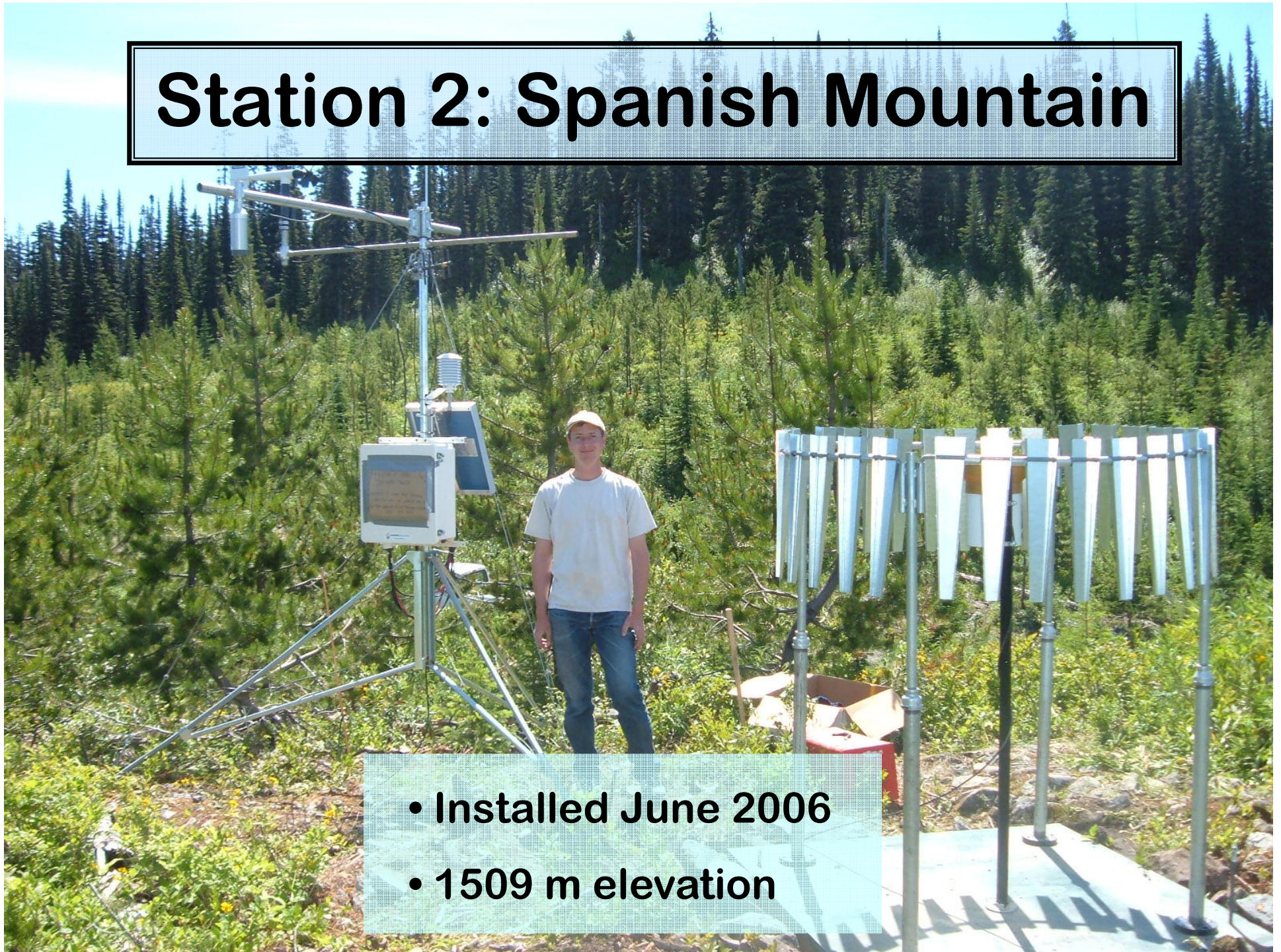


Station 1: QRRC



Jan. 15, 2009

Station 2: Spanish Mountain



- Installed June 2006
- 1509 m elevation

Station 2: Spanish Mountain




Dec. 14, 2006

Station 3: Browntop Mountain



- Installed August 2006
- 2030 m elevation

Station 3: Browntop Mountain



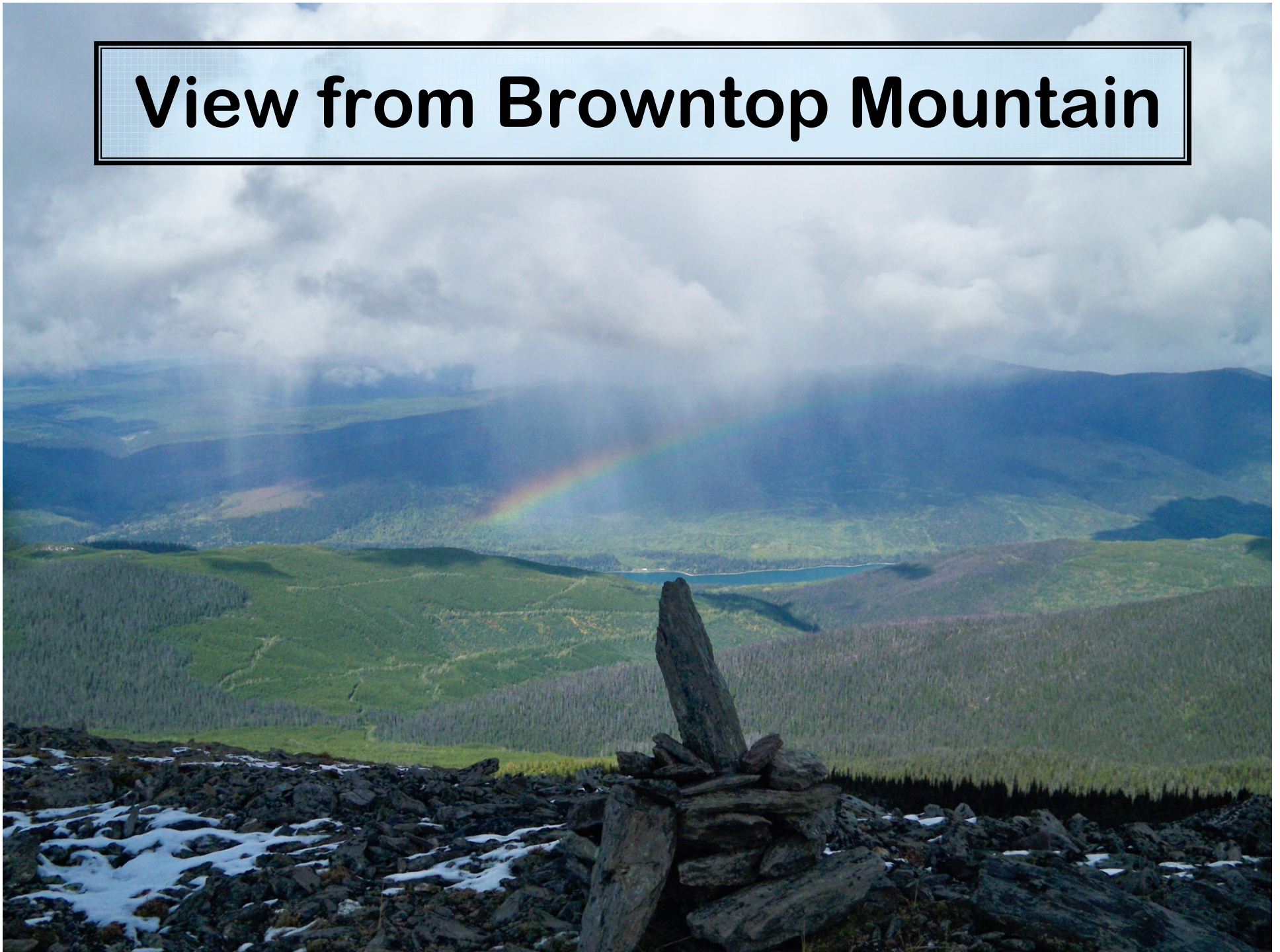
June 18, 2008

Station 3: Browntop Mountain



Sept. 11, 2010

View from Browntop Mountain



View from Browntop Mountain



Station 4: Blackbear Mountain

- 
- Installed August 2006
 - 1590 m elevation
 - Dismantled June 2007
 - 2009-Radio Repeater Station

Blackbear Mountain Landslide



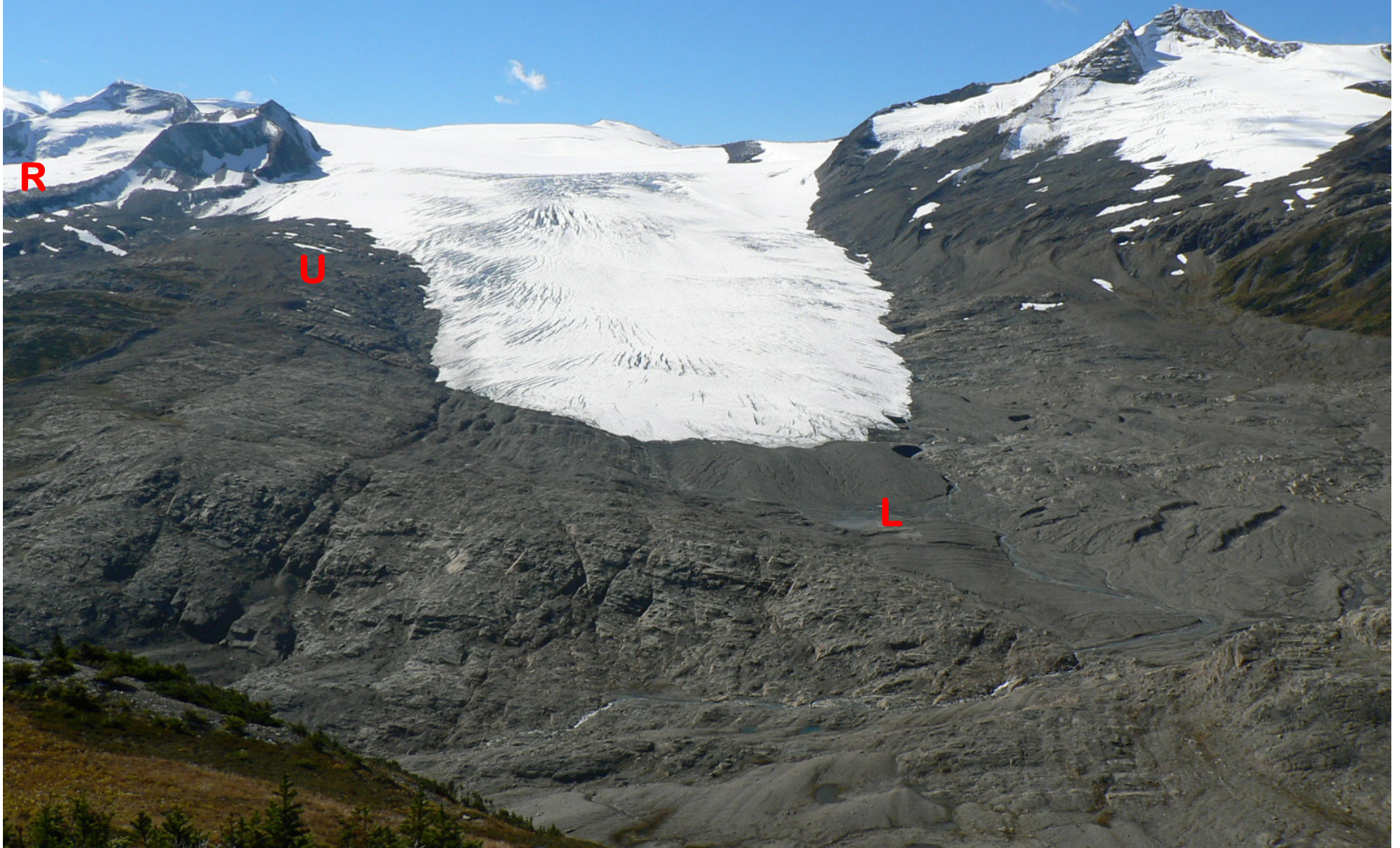
June 24, 2009

Station 5: Mount Tom

- Installed September 2007
- 1490 m elevation
- Dismantled and moved to Ancient Forest 2009



Castle Creek Glacier



Station 6: Upper Castle Creek Glacier



- Installed August 2007
- 2105 m elevation

Station 6: Upper Castle Creek Glacier

May 5, 2008

Source: Andy Clifton



Station 7: Lower Castle Creek Glacier



- Installed August 2008
- 1803 m elevation

Castle Glacier Radio Repeater Station

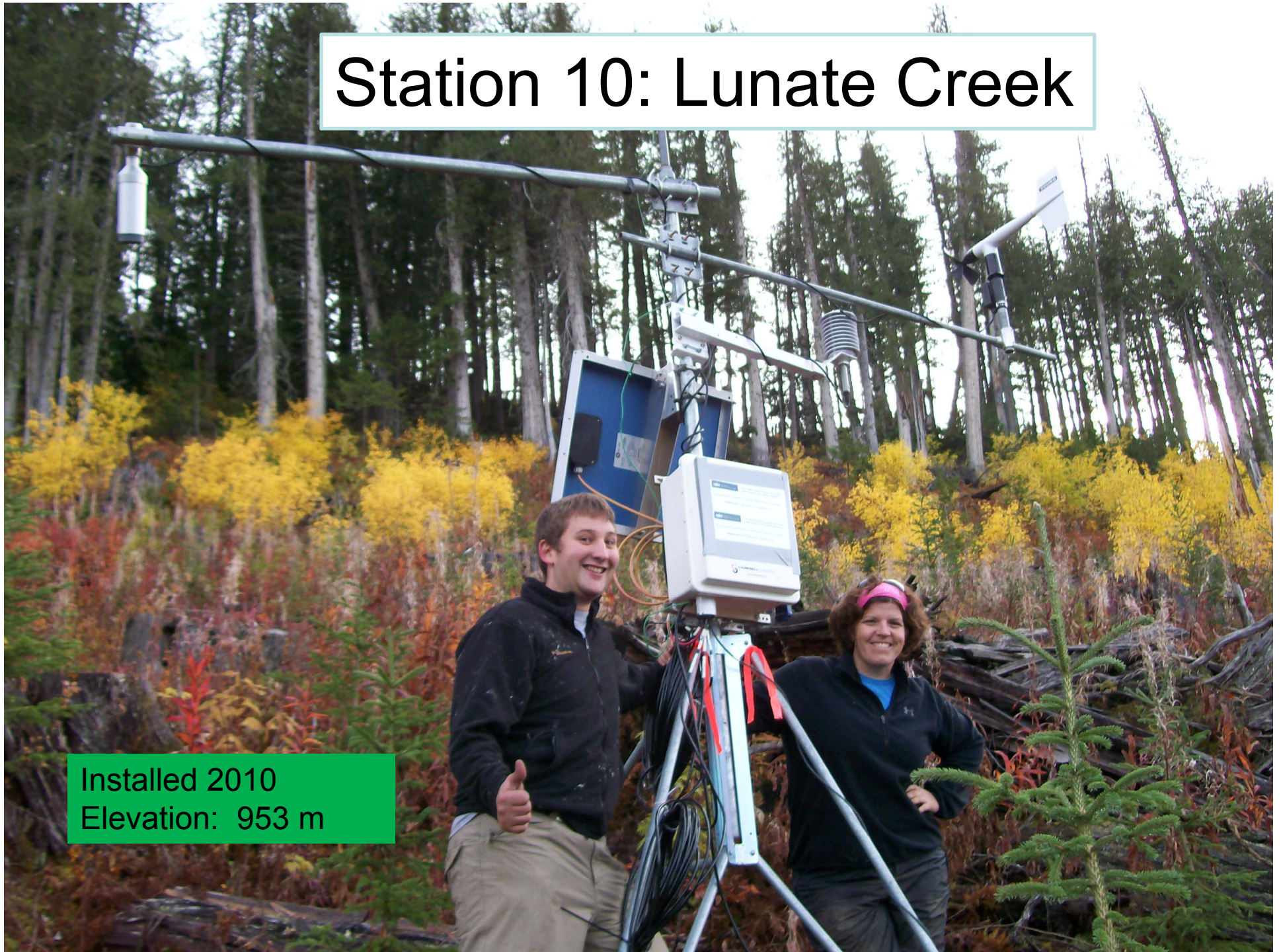


- Installed Aug. 1, 2009
- 2200 m elevation

Station 9: Ancient Forest

- Installed October 2009
- 774 m elevation

Station 10: Lunate Creek

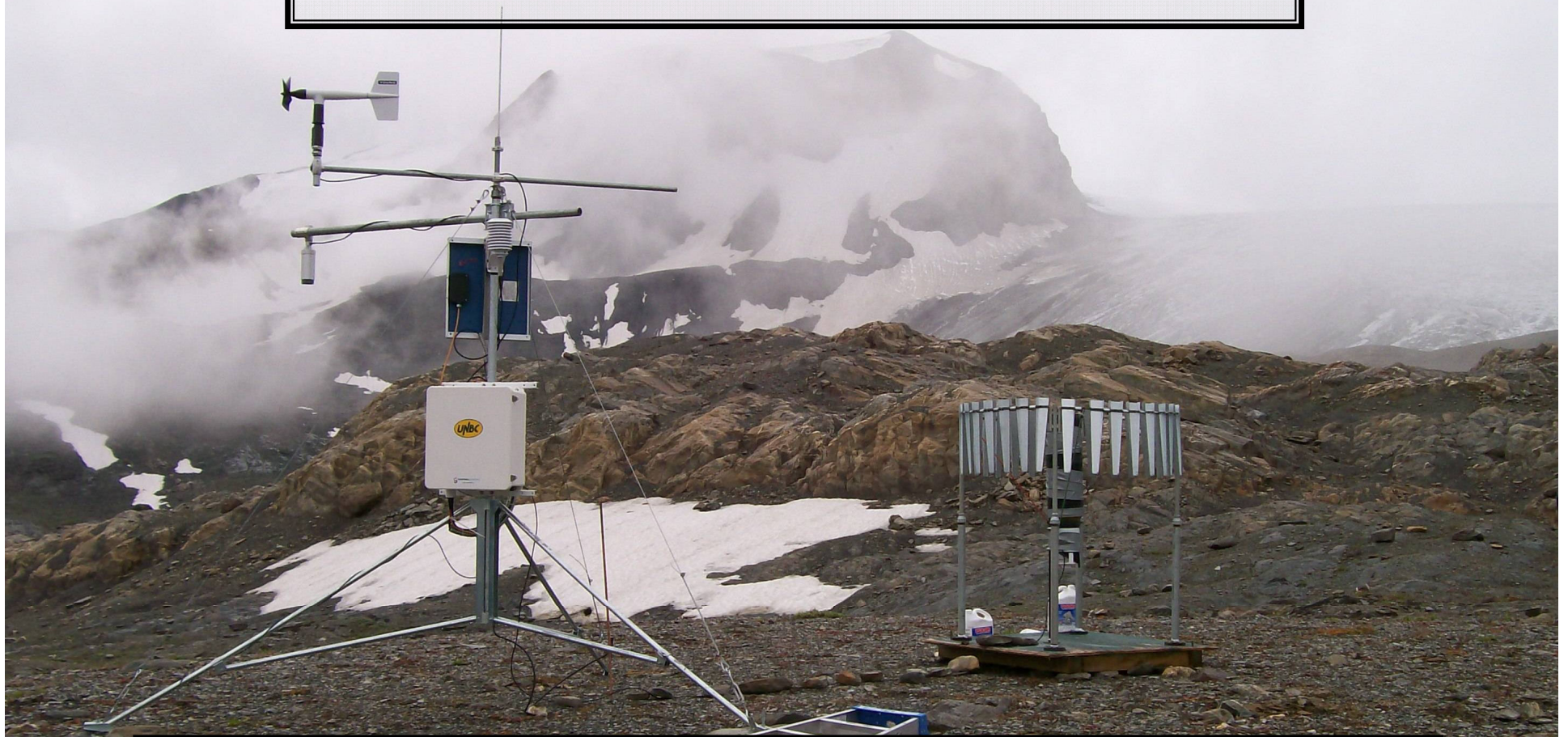


Installed 2010
Elevation: 953 m

CAMnet Future Developments

- 1. High-frequency data collection at Castle Creek**
- 2. (Near) real-time data transfer from QRRC to UNBC**
- 3. Deployment of two new station in 2011**

CAMnet On The Web



<http://cam.unbc.ca/>

<http://web.unbc.ca/~cliftona/wiki/>

Current NHG Members



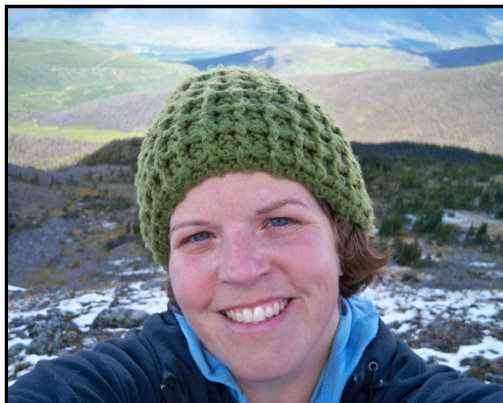
Tullia Upton
Master's Student



Stephen Déry
Associate Professor



Kara Przeczek
Master's Student



Heidi Knudsvig
Master's Student



Ian Picketts
Ph.D Student



Bryndel Fell
Research Assistant



**THANK
YOU!**